

**Optional Items**

265020060G(02)



**Specification**

		S400			
		CO2		Fiber	Dual
<b>Work Area</b>		1016 x 610 mm (40 x 24 in.)			
<b>Max. Part Size</b> (L x W x H)	All doors closed	1053 x 647 x 280 mm (41.4 x 25.4 x 11 in.)			
	All dooropen	1053 x 647 x 280 mm (41.4 x 25.4 x 11 in.)			
<b>Dimensions (W x D x H)</b>		1440 x 900 x 1048 mm (56.7 x 35.5 x 41.3 in.)			
<b>Weight</b>	CO230W-40W	260 kg / 573 b			
	CO260-100W	270 kg / 595 b			
	Fiber 20W-60W	260 kg / 573 b			
<b>Laser Source</b>	10.6-µm CO2 laser	9.3-µm CO2 laser	Fiber laser	10.6-µm CO2 laser: 40 to 120W 9.3-µm CO2 laser: 60W	
	40-120W	60W	20 / 30 / 60W	Fiber laser: 20 / 30 / 60W	
<b>Cooling</b>	Air-cooled, Operating environment temperature 15° - 30° C (59° - 86° F)				
<b>Drive</b>	Closed-loop CC servo control				
<b>Maximum Motor Speed</b>	140 IPS				
<b>Speed Control</b>	Adjustable from 0.1-100% (Up to 16 color-linked speed settings per job)				
<b>Power Control</b>	Adjustable from 0-100% (Up to 16 color-linked power settings per job)				
<b>Engraving Capability</b>	256-level gray scale image processing capability				
<b>Distance Accuracy</b>	0.254 mm or 0.1% of move, whichever is greater				
<b>Z-Axis Movement</b>	Automatic				
<b>Focus Lens</b>	CO2: Standard 2.0" (Optional 1.5", 2.5" & 4.0")				
	Fiber: Standard 2.0" (Optional 4.0") Dual (CO2+Fiber): Standard 2.0" (Optional 3.0" & 4.0")				
<b>Resolution (DPI)</b>	Available 125, 250, 300, 380, 500, 600, 760, 1000, 1500				
<b>Interface</b>	10Base-T Ethernet				
	USB Type-A 2.0 For USB storage (Max. 32GB capacity, FAT file system)				
	USB Type-B 2.0 For connecting with the computer				
<b>Compatible Operating System</b>	MS Windows 64 Bit				
<b>Control Panel</b>	Touch Screen				
<b>Safety</b>	Class I Laser Product Complies with EN60825-1:2014, EN ISO 13849-1:2015 Class 1 Laser Product Complies with CDRH for CO2 Laser Class 3R Laser Product Compliant with CDRH for Fiber & Dual Laser sources 2006/42/EC Machinery Directive Compliance Class 4 Laser Product Compliant with CDRH with the optional pass-through door module				
<b>Operating Voltage</b>	Below 80Watt, 100-240VAC, 50/60HZ Auto Switching, max. 15A 80Watt and above, 200-240VAC, 50/60HZ Auto Switching, max. 15A				
<b>Fume Extraction System</b>	External exhaust system with minimum flow rate 800m3/h (CFM 471 ft3/min) is required, 2.3kPa negative pressure (Pure-Air PA-1500FS@ 4" exhaust port)				



# The Flagship Model of The Laser Engraver

Your Best Ever, Beyond Expectation, Unlimited Laser Machine.



## Laser Engraver S400

- 1016 x 610 x 30 mm (40 x 24 x 11 in.) extra large working area
- 140ips high speed with DC servo motor for precise and rapid movement of the laser carriage
- GCC SmartFLOW™ technology provides outstanding dust protection
- GCC SmartLID™ invention makes maintenance a lot easier
- QSM (Quality Speed Mode) maintains 100% engraving quality while operating at maximum speed
- Patented SmartACT™ motion control technology increases your productivity by reducing ramping process and job running time
- Drag and engrave feature assures remarkably easy and fast set-ups
- Pass-through front and rear doors to accommodate long working pieces (optional)
- CO2 and Fiber laser option in one laser machine

\* La velocidad no es igual al rendimiento. Consulte al distribuidor o visite [www.GCClaser.net](http://www.GCClaser.net) para obtener más detalles.  
 \* El caudal está determinado por un sistema de extracción de humos predeterminado; el caudal puede variar debido a un sistema de extracción de humos diferente.  
 † Las especificaciones están sujetas a cambios sin previo aviso.  
 \*\*\* Utilice marcas certificadas por GCC para el almacenamiento USB LaserPro; consulte los manuales de usuario de GCC para obtener más detalles.



Distribuidor oficial:  
**X-TRONG Laser Technologies S.L.**  
 08137465  
 Port Ginesta, Local 922  
 Les Botigues de Sagot (Sagot) 08860 - BCN  
[info@xtronglaser.com](mailto:info@xtronglaser.com)  
 687205809 / 622355849



X-trong Laser Technologies S.L.  
 Calle C, 28 - Pol. Ind. Molí dels Freres - Sant Vicenç dels Horts (Barcelona - España) - CP: 08620  
 Web: [www.xtronglaser.com](http://www.xtronglaser.com) email: [info@xtronglaser.com](mailto:info@xtronglaser.com) Tel: 622355849 / 687205809

[www.LaserMarketOnline.com](http://www.LaserMarketOnline.com) - Calle Tecnología Nº17 - 08840 VILADECANS - Barcelona  
 Tel: 63495634 - Jordi R. - email: [info@lasermarketonline.com](mailto:info@lasermarketonline.com)

Innovation With a Human Touch



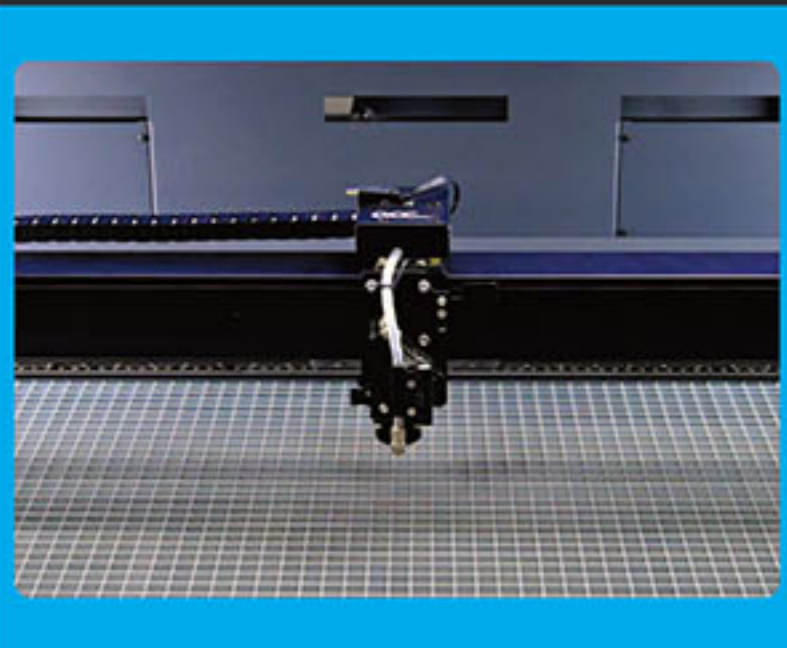
# GCC LaserPro S400

## Laser Engraver GCC LaserPro S400

Inherit all the advantages from Spirit Hybrid, a brand new machine – S400 features 140ips processing speed by DC servo motor, innovative touch panel, user friendly interface and a modern good looking design. Together with SmartFLOW™ dust prevention technology and SmartLID™ easy access invention, S400 presents you the highest throughput and precise laser quality. GCC S400 makes all your imaginations to life at the speed of light.

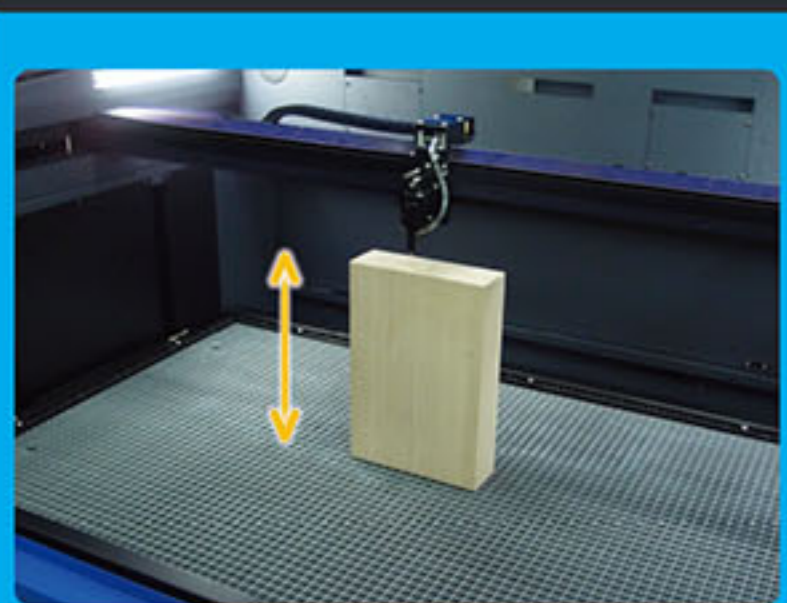


## Features



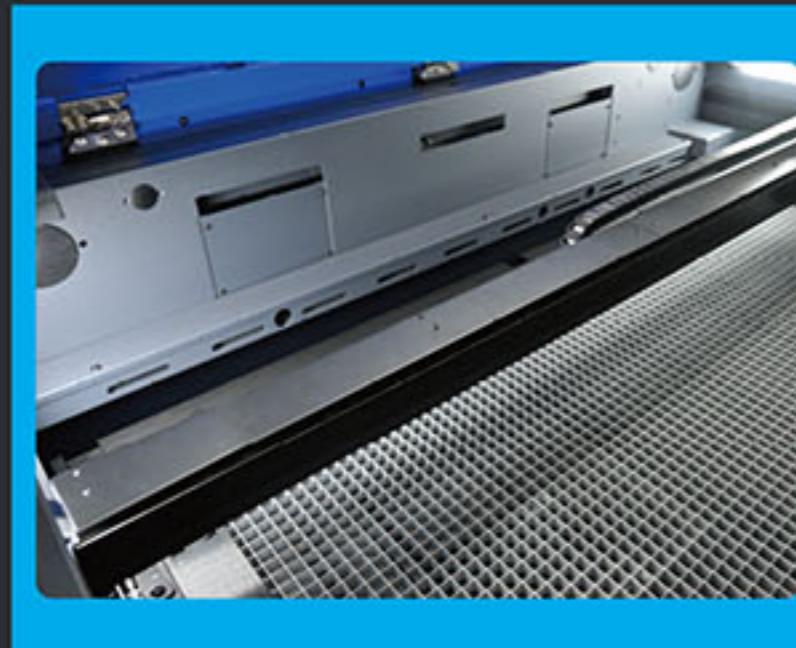
### Perfect Cutting and Engraving Throughput

Maximum 140ips processing speed with powerful DC servo motor to boost productivity while maintaining precision.



### Higher Working Depth

Depth of Z-axis up to 11" (280 mm) thick.



### SmartSEAL™ Technology

New gantry design to prevent dust, the easy take-off cover also makes the maintenance a lot easier.



### Dust Prevention

Incorporating metal panels to protect key components, but not seal entirely to ease any difficulty of maintenance.



### SmartFLOW™ Technology

SmartFLOW™ invention creates a perfect Air Flow to enhance the vacuum effect and bring out the dust completely while working.



### SmartLID™ Easy Access

Easy access design simplifies maintenance.



### Intuitive Touch Screen

Operation is easy and intuitive with the 4" touchscreen.



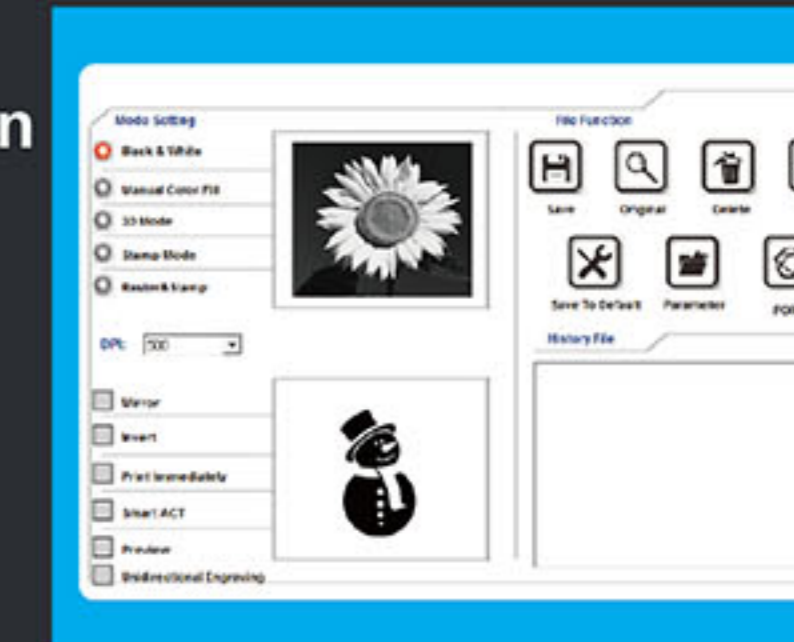
### SmartACT™ (Patented)

Ground-breaking technology that reduces the ramping process and the job running time, which translates into higher productivity.



### Pass-through Front & Rear Doors (Optional)

Convenient front and rear door open design enables loading of extremely long working pieces with ease and extends business flexibility.



### User Friendly Driver Interface

Starting from end users' view, GCC driver evolves into a brand new design with the intuitive interface to favor each user.

## GCC LaserPro S400 Application

